

# SMD UNSHIELDED POWER INDUCTORS

COMPONENT

## PRODUCT IDENTIFICATION



**SRHN4D06** -  $\square\square\square$   $\square$   
**A**                      **B**                      **C**

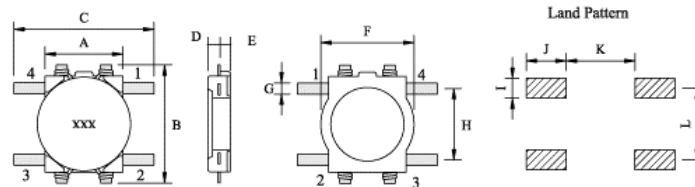
- A : SMT Shielded Power Inductors
- B : Inductance
- C : Tolerance (K:10%,L:15%,M:20%,N:30%)

## APPLICATIONS

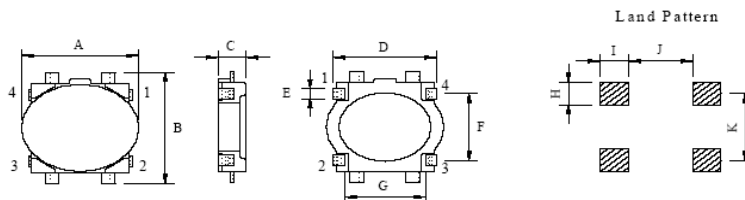
- DC-DC converter of portable equipment.
- Camcorder, LCD television set, Digital camera, P.D.A., Notebook.

## SHAPES & DIMENSIONS

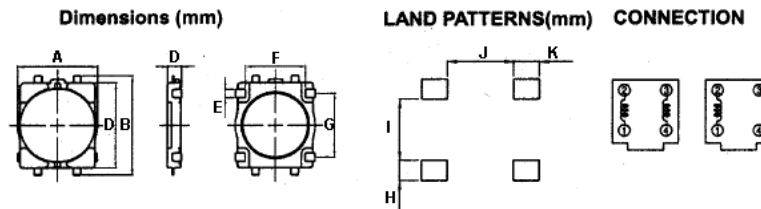
4D06/4D08



4D11/4D13



5D11/5D13



UNIT IN mm

TYPE	A (Max)	B (Max)	C (Max)	D (Max)	E (Ref.)	F (Ref.)	G	H	I	J	K	L
SRHN4D06	3.5	5.8	6.3	0.8	0.4	4.1	0.5	3.2	0.9	1.5	4.0	3.2
SRHN4D08	3.5	5.8	6.3	1.0	0.4	4.1	0.5	3.2	0.9	1.5	4.0	3.2
SRHN4D11	4.4	5.8	1.2	3.7	0.5	3.2	2.9	0.8	1.4	2.5	3.2	-
SRHN4D13	4.4	5.8	1.45	3.7	0.5	3.2	2.9	0.8	1.4	2.5	3.2	-
SRHN5D11	5.8	7.4	-	1.2	0.6	4.2	4.5	1.1	3.4	3.6	1.4	-
SRHN5D13	5.8	7.4	-	1.5	0.6	4.2	4.5	1.1	3.4	3.6	1.4	-

※Design as Customer's Requested Specifications.

# SMD UNSHIELDED POWER INDUCTORS

COMPONENT

## ELECTRICAL CHARACTERISTICS

### SRHN 4D06/4D08/4D11/4D13/5D11/5D13 SERIES

Inductance		4D06			4D08		
Code	(uH)	Test Freq. (Hz)	RDC( $\Omega$ ) Max.	IDC(A) Max.	Test Freq. (Hz)	RDC( $\Omega$ ) Max.	IDC(A) Max.
2R2M	2.20	100K	0.116	0.95	-	-	-
3R3M	3.30	100K	0.174	0.77	100K	0.160	0.85
4R7M	4.70	100K	0.216	0.75	100K	0.194	0.80
6R8M	6.80	100K	0.296	0.62	100K	0.276	0.65
100M	10.00	100K	0.457	0.50	100K	0.335	0.57
150M	15.00	100K	0.676	0.40	100K	0.508	0.45
220M	22.00	100K	1.066	0.30	100K	0.766	0.37
330M	33.00	100K	1.647	0.24	100K	1.162	0.28
470M	47.00	100K	2.843	0.18	100K	1.658	0.22
680M	68.00	-	-	-	100K	2.534	0.18
101M	100.00	-	-	-	100K	3.304	0.17

Inductance		4D11			4D13		
Code	(uH)	Test Freq. (Hz)	RDC( $\Omega$ ) Max.	IDC(A) Max.	Test Freq. (Hz)	RDC( $\Omega$ ) Max.	IDC(A) Max.
2R2M	2.20	100K	0.116	0.95	-	-	-
3R3M	3.30	100K	0.174	0.77	100K	0.160	0.85
4R7M	4.70	100K	0.216	0.75	100K	0.194	0.80
6R8M	6.80	100K	0.296	0.62	100K	0.276	0.65
100M	10.00	100K	0.457	0.50	100K	0.335	0.57
150M	15.00	100K	0.676	0.40	100K	0.508	0.45
220M	22.00	100K	1.066	0.30	100K	0.766	0.37
330M	33.00	100K	1.647	0.24	100K	1.162	0.28
470M	47.00	100K	2.843	0.18	100K	1.658	0.22
680M	68.00	-	-	-	100K	2.534	0.18
101M	100.00	-	-	-	100K	3.304	0.17

Inductance		5D11			5D13		
Code	(uH)	Test Freq. (Hz)	RDC( $\Omega$ ) Max.	IDC(A) Max.	Test Freq. (Hz)	RDC( $\Omega$ ) Max.	IDC(A) Max.
3R3M	3.30	100K	0.109	0.94	100K	0.081	1.25
4R7M	4.70	100K	0.156	0.80	100K	0.106	1.20
6R8M	6.80	100K	0.216	0.65	100K	0.144	0.90
100M	10.00	100K	0.275	0.53	100K	0.187	0.85
150M	15.00	100K	0.438	0.40	100K	0.300	0.57
220M	22.00	100K	0.663	0.36	100K	0.431	0.54
330M	33.00	100K	0.975	0.32	100K	0.637	0.38
470M	47.00	100K	1.380	0.26	100K	0.875	0.35
680M	68.00	100K	1.700	0.23	-	-	-
101M	100.00	100K	2.800	0.20	-	-	-

※ Test Freq. : 100KHz/0.1V.

※ Operating Temp. : - 40°C ~ +85°C

※ Inductance drop = 35%typ. At IDC